



CLINICOPATHOLOGICAL SPECTRUM AND EXPRESSION OF VEGF-C IN PATIENTS PRESENTING WITH ORAL SQUAMOUS CELL CARCINOMA IN PAKISTAN

Rakia Sahaf¹., Aman-ur-Rehman²., Sunila Hussain³., Ghulam Rasool⁴., Sameer Anjum⁵., Abdul Hanan Nagi⁶ and Nadia Naseem⁷

^{1, 3, 4, 5, 6, 7}Morbid anatomy and histopathology department, University of Health Sciences Lahore, Pakistan

²Department of Histopathology, Sheikh Zayed Hospital Lahore, Pakistan

ARTICLE INFO

Article History:

Received 11th September, 2017
Received in revised form 5th
October, 2017
Accepted 16th November, 2017
Published online 28th December, 2017

Key words:

Lymph node metastasis; Vascular endothelial growth factor C (VEGF-C); Lymphangiogenesis

ABSTRACT

Background: Oral squamous cell carcinoma (OSCC), being the sixth most prevalent cancer worldwide, is characterized by local invasion and high metastatic and recurrence rates. Lymphangiogenesis facilitates invasion and nodal metastasis, and vascular endothelial growth factor-C (VEGF-C) has been implicated as a key mediator of this process. The aim of the present study was to determine VEGF-C expression in OSCC and its association with clinicopathological parameters and lymph node metastasis in our population.

Methods: Biopsies from 110 OSCC patients, with detailed documentation of their clinical data were included. After histological examination, cases were evaluated immunohistochemically for VEGF-C expression. Reactions were quantified and relation with clinicopathological parameters explored. The data was analysed using SPSS 21.0.

Results: Mean age of the patients was 59.91 ± 1.36 years with male to female ratio being 1.2:1. OSCC was commonly associated with smoking (30.9%). Immunohistochemical staining of the histological tissue sections of all cases of well (n= 42), moderate (n = 38) and poorly-differentiated OSCC (n = 30) revealed extensive VEGF-C immunopositivity compared to normal keratinocytes. VEGF-C expression was associated significantly with clinical variables (P <0.05), lymph node metastasis (P <0.004) and the degree of differentiation of the tumour (P <0.001).

Conclusion: These findings underscore the significance of VEGF-C expression in relation to oral carcinogenesis and lymph node metastasis, thereby highlighting its potential for being a promising target for antibody-based therapeutic strategies in Pakistan.

Copyright © 2017 Rakia Sahaf et al. This is an open access article distributed under the Creative Commons Attribution License, which permits unrestricted use, distribution, and reproduction in any medium, provided the original work is properly cited.

INTRODUCTION

Oral squamous cell carcinoma (OSCC) is globally among the most frequently reported malignancies and a leading cause of cancer related deaths in the developing countries like Pakistan. Its high morbidity and severe functional impairment impose a heavy burden on global public health.

OSCC is characterized by local invasiveness and distant metastasis. The metastatic dissemination of OSCC preferentially occurs through the lymphatic system. Lymphangiogenesis plays a vital role in tumour growth and systemic dissemination of different carcinomas.¹

Vascular endothelial growth factor C (VEGF-C) is regarded as lymphangiogenic growth factor that has been implicated in inducing the growth of both blood and lymphatic vessels and regulates proliferation, differentiation and migration of lymphatic endothelial cells in many physiological and pathological conditions.² It plays a crucial role in the

extracellular matrix remodelling and tumour cell invasion by inducing the production of urokinase by cancer.³ Overexpression of VEGF-C has been detected in various malignancies and is frequently associated with lymphatic invasion, nodal and distant metastasis and consequently poor survival.

VEGF-C signalling is involved in the progression of several malignancies that put forward VEGF-C as a potential target for the development of new anticancer therapies to prevent local invasion and metastatic spread of disease. Hence, this study was designed to determine the immunohistochemical expression of VEGF-C in OSCC and to evaluate its association with various clinicopathological factors and lymph node metastasis of the tumour in Pakistan.

MATERIALS AND METHODS

Study participants

This descriptive study comprised a total of 110 biopsies of patients who reported with OSCC at different tertiary care hospitals of Lahore, Pakistan, between Jan.2016- Sep.2016. Patients from all the age groups and of both genders were enrolled in the study. While those already on radiotherapy, chemotherapy or with a history of comorbidity and/or with recurrence or necrotic tissue specimens were excluded. Written informed consent from the selected patients and an approval from institutional ethical review committee of the University of Health Sciences Lahore, Pakistan (ERC approval vide letter no: UHS/Education/126-15/1776), were obtained prior to the commencement of the study. Demographic and clinical data including age, gender, history of tobacco or betel quid consumption, tumour location and clinical presentation were collected by reviewing patient records.

Histological examination

The specimens were processed for making tissue blocks and sections were cut and stained with haematoxylin and eosin for confirmation of the primary diagnosis. To evaluate malignancy, the histological grading of the specimens was undertaken according to Bryne's classification.⁴ The degree of keratinization, nuclear polymorphism, pattern of invasion and inflammatory infiltration were analysed, each with a score varying from 1 to 4. Total score was calculated by adding the points for each parameter in order to estimate the degree of malignancy of the tumour. Other discrete histological factors, including presence or absence of lymph node metastasis, were also evaluated.

Immunohistochemistry

About 4 μ m thick paraffin embedded tissue sections were cut by rotary microtome and collected on Poly-L-lysine coated slides. Sections were deparaffinised in xylene and rehydrated in graded ethanol and were then microwaved in citrate buffer solution (pH 6.0) for two 5 min cycles in order to retrieve antigens. Standard 'Streptavidin biotin Peroxidase' method was employed for immunostaining. Sections were incubated with rabbit anti-human VEGFC polyclonal antibody (Abcam ab135506, Cambridge, UK; dilution, 1:25) for 1 hour at room temperature. Then they were reacted with biotinylated secondary antibody, followed by streptavidin peroxidase reagent for 30 min each. All stages were separated by PBS washes, and final visualisation was by DAB chromogen. Sections were counterstained with haematoxylin and finally dehydrated and mounted. Positive (colon cancer) and negative (omission of primary antibody) controls were included in each staining run.

Quantification of VEGF-C Expression

VEGF-C expression was evaluated using a light microscope by two pathologists, blinded to the information of clinical outcomes. Scoring was done based on the proportion and intensity of staining in tumour cell cytoplasm. The intensity of staining was evaluated as follows: 0, no staining; 1, weak; 2, moderate; and 3, strong. The proportion of positive tumour cells was scored as 0 (No positive cells); 1 (1-10% positive cells); 2 (11- 49% positive cells); 3 (> 50% positive cells). A combined score for VEGF-C was based on the summation of intensity and the proportion score and was categorized into

four groups, where 0= No staining; 2= weak, 3-4= moderate, 5-6= strong.⁵

Statistical Analysis

The data was analysed statistically using SPSS 21.0. Frequencies and percentages were given for qualitative variables and mean \pm S.D were computed for quantitative variables. Pearson Chi square and Fisher Exact test were applied to observe the associations between the variables. A *P* value of ≤ 0.05 was considered as statistically significant.

RESULTS

Clinicopathological data of Study population

A total of 110 OSCC cases were included in accordance with the inclusion and exclusion criteria. Among 110 cases, 54 (49.1%) OSCC patients presented with lymph nodes metastasis, confirmed by histopathological analysis. Patient characteristics and histological parameters of the studied cases are summarized in Table-1

Table 1 Clinicopathological profile of 110 oral squamous cell carcinoma cases

Variables	Lymph node Metastasis	
	Present n (%)	Absent n (%)
<i>Gender</i>		
Male	21(19.1)	39(35.5)
Female	41(37.3)	9(8.2)
<i>Age</i>		
25-40 years	10(9.1)	0
41-60 years	21(19.1)	29(26.4)
61-80 years	31(28.2)	19(17.3)
<i>Site</i>		
Buccal mucosa	7(6.4)	9(8.2)
Gingiva	0	10(9.1)
Lower lip	5(4.5)	15(13.6)
Floor of the mouth	20(18.2)	0
Tongue	30(27.3)	14(12.7)
<i>Etiological factors</i>		
Yes	47 (42.7)	31(28.2)
No	15 (13.6)	17(15.5)
<i>Histologic grade</i>		
Well	12(10.9)	30(27.3)
Moderate	24(21.8)	14(12.7)
Poor	26(23.6)	4(3.6)

The mean age of the study patients was 59.91 \pm 1.36 years (range: 30-80 years). The male to female ratio was 1.2:1 x with most cases reported in 6th to 8th decade of life (*p* < 0.001). The age range in males was 30 to 80 years while in females it was 45 to 75 years. Among the 110 biopsies located at variable sites (Fig.1), OSCC predominantly affected tongue (40%). In females, predominant involvement of tongue was seen (60%) whereas buccal mucosa was the commonest site involved in males (26.7%).

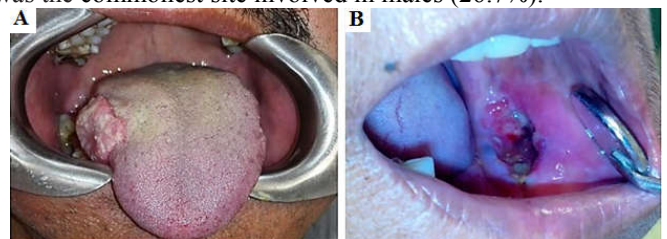


Figure 1 (A) OSCC on the lateral border of tongue presenting as an exophytic mass (B) Ulcerative lesion of OSCC on left buccal mucosa

Diverse clinical presentations were seen in the current study cases, (Table 2) with most of the patients presenting with an ulcerative lesion (60.9%) (Table1).

Table 2 Expression VEGF-C in oral squamous cell carcinoma (OSCC) and its association with clinicopathologic parameters

Characteristics	Total n (%)	VEGF-C expression			P value	
		Weak Positive n (%)	Moderate Positive n (%)	Strong Positive n (%)		
<i>Age (years)</i>						
25-40	10	0	10(100)	0		
41-60	50	0	34(68)	16(32)	<0.001	
61-80	50	10(20)	20(40)	20(40)		
<i>Gender</i>						
Female	50	10(20)	20(40)	20(40)	<0.001	
Male	60	0	44(73)	16(27)		
<i>Site</i>						
Buccal mucosa	16	0	10(62.5)	6(37.5)	0.001	
Gingiva	10	0	10(100)	0		
Lower lip	20	0	10(50)	10(50)		
Floor of the mouth	20	0	10(50)	10(50)		
Tongue	44	10(23)	24(54)	10(23)		
<i>Clinical presentation</i>						
Ulceration	67	10(15)	41(61)	16(24)		0.004
Swelling	40	0	20(50)	20(50)		
Exophytic mass	3	0	3(100)	0		
<i>Etiological factor</i>						
Betel nut chewing	23	1(4)	9(39)	13(57)	<0.001	
Smoking	34	2(6)	15(44)	17(50)		
Both	21	1(5)	19(90)	1(5)		
<i>Histologic grade</i>						
Well differentiated	42	2(5)	40(95)	0	<0.001	
Moderately differentiated	38	8(21)	10(26)	20(53)		
Poorly differentiated	30	0	14(47)	16(53)		
<i>Lymph node metastasis</i>						
Present	62	10(16)	30(48)	22(36)	0.004	
Absent	48	0	34(71)	14(29)		

Regarding the aetiology, 78(70.9%) patients reported with history of smoking and/or betel quid chewing. Whereas 32(29.1%) patients had no identifiable risk factors. Smoking was the most common aetiological agent in the present study constituting 34(30.9%) cases while the simultaneous presence of smoking and betel quid chewing was observed in 19.9 % cases.

With regards to histological grade of the tumour, well differentiated OSCC was the most frequent presentation (38.2%) in the current study cases followed by moderate (34.5%) and poorly differentiated carcinoma (27.3%).

In the current study, among the 110 OSCC patients, 62 (56.4%) cases presented with lymph node metastasis (Fig. 2A). The presence of nodal metastasis was higher among the patients with a history of cigarette smoking (37%). Significant association was instituted between lymph node metastases and histological grades of the tumour (P<0.001) with most cases of poorly differentiated OSCC (86.7%) exhibiting nodal metastasis more frequently than moderate (63.2%) and well (28.6%) differentiated tumours.

VEGF-C immunoreactivity

In the present study, 110 OSCC cases were subjected to immunohistochemistry to assess the proportion and intensity of VEGF-C expression. VEGF-C immunopositivity was detected in all OSCC specimens with cytoplasmic staining for the positive tumour cells that ranged from weak to strong positive expression. Conversely, in adjacent normal mucosa, weak to negative immunoreaction was seen (Fig. 2B).

In OSCC combined score resulting from staining intensities and proportions of positive cells depicted strong positive immunoreaction in 36% cases (Fig. 3B,C) while moderate expression was noted in 64% and only 10% showed weak immunoreactivity to VEGF-C (Fig. 3A). VEGF-C expression was detected in the tumour cell nests, with strong positive expression seen in the cytoplasm of invasive tumour cells (Fig. 2C).

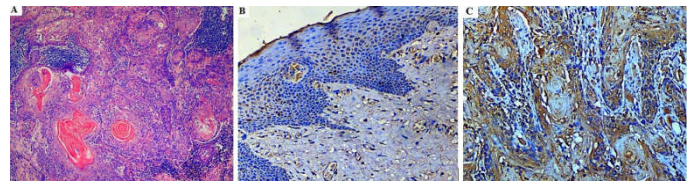


Figure 2 (A) Photomicrograph of lymph node metastasis in a case of moderately differentiated OSCC (H&E, x100) (B) Normal oral mucosa showing weak to negative staining for VEGF-C (IHC, x200) (C) OSCC showing strong cytoplasmic expression of VEGF-C in the invasive tumour front (IHC, x200)

Association of VEGF-C expression with clinicopathological parameters

VEGF-C immunoreactivity with respect to different clinicopathological parameters of the studied OSCC cases demonstrated a significant relation between VEGF-C expression and age, gender, clinical presentation, etiological factor and location of the tumour (P <0.05). In different histological grades of OSCC variable VEGF-C immunoreactivity was seen (Fig. 3). Moderate positivity (95%) for VEGF-C was the most frequently observed score in well differentiated OSCC whereas strong positive expression was predominant in moderate (52.6 %) and poorly differentiated carcinomas (53.3%) (P<0.001).

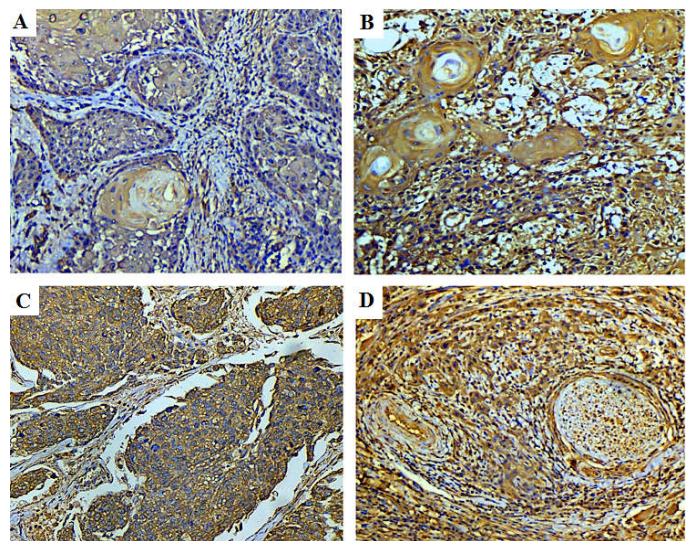


Figure 3 Photomicrograph of (A) well differentiated OSCC showing weak positive cytoplasmic staining (VEGF-C IHC, 200x) (B) Moderate and (C) Poorly differentiated OSCC with strong positive cytoplasmic staining (VEGF-C IHC, 200x) (D): Photomicrograph showing strong VEGF-C staining of tumour cells invading a neurovascular bundle (VEGF-C IHC, 200x)

Moreover, the association between the expression of VEGF-C and lymph node metastasis was also found to be statistically significant ($P=0.005$) with 61% cases with lymph node metastasis showing strong positive VEGF-C expression.

DISCUSSION

Lymphangiogenesis is a crucial requisite for growth and progression of malignant neoplasms. Association of VEGF-C with lymphangiogenesis has provided a likely mechanism for the tumour cells to metastasize through lymphatics, facilitating invasion and systemic dissemination of tumour. Its high expression in various malignancies have been correlated with tumour progression, nodal and distant metastasis and subsequently poor patient survival.³ Thus this study was designed to determine the immunohistochemical expression of VEGF-C in biopsy samples of OSCC and its association with clinicopathological characteristics and lymph node metastasis of the tumour presenting in our part of the world. In future, this study may serve as a benchmark for further assessment of VEGF-C in prognosis and targeted molecular therapy of oral squamous cell carcinogenesis in Pakistan.

In the current study, among the 110 OSCC cases evaluated for different clinicopathological variables, the age related findings (mean 59.91 ± 1.36 years, range 30–80 years) are consistent with the study conducted by Sato *et al.*⁶ A slight male predilection (Male: Female ratio, 1.2:1) was seen in the present study with the tongue being the most frequently affected site, corroborating data from reviewed literature.⁷

In line with the findings of the current study, Syam *et al.*⁸ demonstrated that smoking is the most prevalent etiological agent among the OSCC patients. Consumption of betel quid was more frequent in females while tobacco smoking habit was common in males, which is consistent with other studies.⁹

The current study revealed a significant relation between the site of OSCC and lymph node metastasis ($P<0.001$) showing that the lesions of tongue were mostly associated with metastasis (48.4%). These results are consistent with the findings of Youssef *et al.*⁷ and might be explained owing to the rich lymphatic drainage and vascular supply of the tongue.

Regarding the histological grade, amongst the 110 studied OSCC cases, well differentiated carcinoma was the most prevalent presentation (64%) followed by moderate and poorly differentiated cases. Similar results were seen in local¹⁰ and international studies.¹¹

According to the immunostaining results of the present study, VEGF-C protein was expressed in all studied cases (100%) and was localised to the tumour cytoplasm. From a total of 110 OSCC cases, $n = 36$ demonstrated strong positive expression while $n=64$ and $n=10$ cases revealed moderate and weak VEGF-C immunoreactivity respectively. Similar to these findings, Abdul-Aziz *et al.*³ demonstrated high levels of this protein in than 97% of OSCC cases. The discrepancies in the immunopositivity seen among various studies might be attributed to the different processing techniques and antibodies used, along with the heterogeneity of oral cancer which may be due to the biological/epidemiological disparities between the population and countries.

However, the adjacent normal tissue investigated in the present study, depicted weak to negative VEGF-C expression (Fig. 2B). This is in compliance with the findings of Benke *et al.*¹² who detected markedly upregulated VEGF-C expression in squamous carcinoma cell lines than the normal keratinocytes. Ming-Xing Ding¹³ reported higher expression of VEGF-C mRNA in oesophageal carcinoma compared to the normal tissue. This remarkably higher expression compared with the normal tissues support a role for VEGF-C in oral squamous cell carcinogenesis suggesting the use of VEGF-C as a potential biomarker to predict the malignant transformation of oral mucosa.

In the current study, significant relationship was seen between VEGF-C immunohistochemical expression and age, gender, site, clinical presentation of OSCC ($P < 0.05$). The association of VEGF-C expression and etiological factor of OSCC was also found to be statistically significant exhibiting strong positivity for VEGF-C in the individuals with the history of tobacco smoking (47%). Akin to these findings, tobacco smoking has also been reported to stimulate VEGF-C expression in cervical carcinogenesis, revealing a significantly higher VEGF-C expression in smokers with cervical intraepithelial neoplasia.¹⁴ The presence of carcinogens in tobacco smoke are a potent stimulator of VEGF-C production. Hypoxia generated by cigarette smoke and HIF-1 α stimulated by nicotine in tobacco plays a critical role in tumour lymphangiogenesis by regulating VEGF-C expression.¹⁵

In the present study, a statistically significant association was seen between VEGF-C expression and degree of differentiation of the tumour ($P<0.001$). This finding was also supported by Wang *et al.*¹⁶ who found the same association in laryngeal squamous cell carcinoma, suggesting that poorly differentiated carcinoma could be more capable of inducing VEGF-C secretion.

In the current study, among 56% OSCC cases presenting with lymph node metastasis, 61% cases demonstrated strong positive VEGF expression ($P=0.005$). In compliance with the findings of Watanabe *et al.*¹⁷ lymph node metastasis was more common in VEGF-C positive patients, suggesting that being a potent inducer of lymphangiogenesis, VEGF-C promotes lymph node metastasis in cancers.

Previously, various studies have reported a correlation between VEGF-C overexpression and risk of lymphatic metastasis in carcinomas of breast, lung, thyroid, pancreas, prostate and oesophagus.¹⁸ Through VEGF-C secretion, primary tumours stimulate dilation of lymphatic vessels and hyperplasia of the sentinel lymph node and increase the number of tumour cells entering the lymphatics thus contributing to nodal metastasis and tumour progression.¹⁹ In early-stage tongue squamous cell carcinoma, VEGF-C expression was reported as a strong indicator for prediction of lymph node metastases²⁰ while in advanced stage head and neck squamous cell carcinoma, VEGF-C overexpression has been correlated to poor patient outcome²¹ as in oral cancers the presence of cervical metastasis increases the likelihood of distant metastasis. Therefore, in oral squamous cell carcinoma progression, VEGF-C expression might be regarded as an important factor influencing metastasis to regional lymph node.

Strong VEGF-C expression, associated with positive nodal involvement, may allow the identification of patients who are more susceptible to unfavourable prognosis and permit optimization of therapeutic strategies and offer appropriate treatment to OSCC patients accordingly. Further PCR based studies are also required as a next step to validate these findings. Moreover follow-up studies investigating the impact of VEGF-C immunohistochemical expression on patients outcome should be conducted in order to determine its relation with disease free/recurrence free survival and prognosis for the patients. This certainly will further improve our understanding of oral SCC tumorigenesis and the role played by VEGF-C.

CONCLUSION

VEGF-C is extensively expressed by the tumour cells in OSCC patients presenting in our population as compared to the normal tissues. Different etiologic factors of oral cancer may elicit tumour lymphangiogenesis via influencing VEGF-C expression. Significant association of VEGF-C protein expression with smoking, lymph node metastasis and degree of histological differentiation highlight the importance of VEGF-C expression in relation to oral carcinogenesis. In this regard VEGF-C might be a promising target for immunotherapeutic approaches, in order to improve morbidity and mortality in OSCC patients in Pakistan.

Acknowledgement

The authors acknowledge the encouragement extended by the Vice Chancellor of University of Health Sciences, Lahore Pakistan. Also the laboratory staff of Morbid Anatomy & Histopathology Department of UHS, Lahore for their technical and logistic support.

Competing Interests

The author(s) declare they have no competing interests

References

- Christiansen A, Detmar M. Lymphangiogenesis and cancer. *Genes Cancer*. 2011; 2(12): 1146-58.
- Chen JC, Chang YW, Hong CC, Yu YH, Su JL. The role of the VEGF-C/VEGFRs axis in tumor progression and therapy. *Int J Mol Sci*. 2013; 14(1): 88-107
- Abdul-Aziz MA, Amin AK, El-Rouby DH, Shaker OG. Lymphangiogenesis in oral squamous cell carcinoma: correlation with VEGF-C expression and lymph node metastasis. *Int J Dent*. 2017; 2017:7285656.
- Bryne M. Is the invasive front of an oral carcinoma the most important area for prognostication? *Oral Dis*. 1998; 4(2): 70-7
- Abdo MM, Gaballah ET, Fikry HE, Mosbah MM. Expression of VEGF-C in oral precancerous lesions and oral squamous cell carcinoma. *Mansoura Journal of Dentistry*. 2014; 1(3):105-108.
- Sato H, Uzawa N, Takahashi KI, Myo K, Ohyama Y, Amagasa T. Prognostic utility of chromosomal instability detected by fluorescence in situ hybridization in fine-needle aspirates from oral squamous cell carcinomas. *BMC Cancer*. 2010; 10(1): 182.
- Youssef HESM, Aboazma NEE, Megahed EME. Correlation of hypoxia-inducible factor-1 alpha (HIF-1 α) and vascular endothelial growth factor (VEGF) expressions with clinico-pathological features of oral squamous cell carcinoma (OSCC). *Tanta Dent J*. 2015; 12: S1-S14.
- Sundar SB, Nageswara RR, Faheem MK. Epidemiological and clinico pathological study of oral cancers in a tertiary care hospital. *Int J Biol Med Res*. 2012; 3(4): 2376-80.
- Akram S, Mirza T, Mirza MA, Qureshi M. Emerging patterns in clinico-pathological spectrum of oral cancers. *Pak J Med Sci*. 2013; 29(3):783-7.
- Khaleel ME, Raza A, Ehsan A, Masood R and Javed M. Clinicopathological spectrum of oral squamous cell carcinoma at a public sector health facility. *Biomedica*. 2015; 31(1): 21-26.
- Krishna A, Singh RK, Singh S, Verma P, Pal US and Tiwari S. Demographic risk factors, affected anatomical sites and clinicopathological profile for oral squamous cell carcinoma in a north Indian population. *Asian Pac J Cancer Prev*. 2014; 15(16): 6755-60.
- Benke EM, Ji Y, Patel V, Wang H, Miyazaki H, Yeudall WA. VEGF-C contributes to head and neck squamous cell carcinoma growth and motility. *Oral Oncol*. 2010; 46(4): e19-24.
- Ding MX, Lin XQ, Fu XY, Zhang N, Li JC. Expression of vascular endothelial growth factor-C and angiogenesis in esophageal squamous cell carcinoma. *World J Gastroenterol*. 2006; 12(28): 4582-5.
- Inamine M, Nagai Y, Mitsuhashi A, Nagase S, Yaegashi N, Yoshikawa H, et al. Cigarette smoke stimulates VEGF-C expression in cervical intraepithelial neoplasia (CIN) 1 and 2 lesions. *Int J Clin Oncol*. 2012; 17(5): 498-504.
- Oliveira-Neto HH, Gleber-Netto FO, De Sousa SF, França CM, Aguiar MC, Silva TA, et al. A comparative study of microvessel density in squamous cell carcinoma of the oral cavity and lip. *Oral Surg Oral Med Oral Pathol Oral Radiol*. 2012; 113(3): 391-8.
- Wang Z, Chen Y, Li X, Xu Li, Ma W, Chang L, et al. Expression of VEGF-C/VEGFR-3 in human laryngeal squamous cell carcinomas and its significance for lymphatic metastasis. *Asian Pac J Cancer Prev*. 2012; 13(1): 27-31.
- Watanabe S, Kato M, Kotani I, Ryoke K, Hayashi K. Lymphatic vessel density and vascular endothelial growth factor expression in squamous cell carcinomas of lip and oral cavity: a clinicopathological analysis with immunohistochemistry using antibodies to D2-40, VEGF-C and VEGF-D. *Yonago Acta Med*. 2013; 56(1): 29-37.
- Naruse T, Yanamoto S, Yamada SI, Takahashi H, Matsushita Y, Imayama N, et al. Immunohistochemical study of vascular endothelial growth factor-C/vascular endothelial growth factor receptor-3 expression in oral tongue squamous cell carcinoma: correlation with the induction of lymphangiogenesis. *Oncol Lett*. 2015; 10(4):2027-34.
- Liersch R, Hirakawa S, Berdel WE, Mesters RM, Detmar M. Induced lymphatic sinus hyperplasia in sentinel lymph nodes by VEGF-C as the earliest premetastatic indicator. *Int J Oncol*. 2012; 41(6):2073-8.

20. Matsui T, Shigeta T, Umeda M, Komori T. Vascular endothelial growth factor C (VEGF-C) expression predicts metastasis in tongue cancer. *Oral Surg Oral Med Oral Pathol Oral Radiol.* 2015; 120(4): 436-42.
21. Tanigaki Y, Nagashima Y, Kitamura Y, Matsuda H, Mikami Y, Tsukuda M. The expression of vascular endothelial growth factor-A and -C, and receptors 1 and 3: correlation with lymph node metastasis and prognosis in tongue squamous cell carcinoma. *Int J Mol Med.* 2004; 14(3): 389-95.
